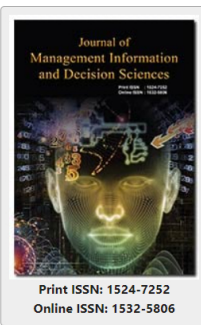


# Journal of Management Information and Decision Sciences (Print ISSN: 1524-7252; Online ISSN: 1532-5806)



## About the Management Information and Decision Sciences

Journal of Management Information and Decision Sciences (JMIDS) is a open access journal affiliated to Allied Business Academies.

The journal focuses on disseminating the latest research in the field of management information system and its role in decision making, as well their relationships to cognate disciplines including Economics, Finance, Management, Management Science, Marketing, Statistics, Operations Research and Engineering.

The journal adheres to stringent double blind peer review policy to maintain the publication quality.

With an acceptance rate of 25% submitted manuscripts, the journal encourages recent discoveries and innovations comprising theoretical, conceptual and empirical research in Information Systems, Decision Sciences and cognate disciplines.

JMIDS caters to the needs of leading business executives and managerial force that is actively involved in management and decision making.

The Journal also publishes extensively for the managerial IT professionals and industry practitioners in the fields of business management, information systems and decision analysis.

Sponsored by the Academy of Management Information and Decision Sciences, JMIDS encompasses a wide spectrum of topics in this field including, but not limited to Sustainable Supply Chain Management, Collective Decision Making, Multi-Attribute Utility Theory, Information System And Decision Making, Fuzzy Models Of Decision Making, Integer and Binary Programming, Linear Programming, Markov Processes, Mathematical Programming, Financial Risk Analysis and Management, Multi-Tier Supply Chain Management, Dynamic and Naturalistic Decision Making, General Decision Making, Applications of Decision Aids, Behavioral Aspects of Decision Making, International Decision Making, North American Decision Making Framework, Resource Dependence Theory, Environmental Management Systems, Marketing Information Systems, Financial Decision Making, Economic Decision Making, Energy Economics and Finance, Operations Research and Engineering.

Further details on the types of manuscripts published and the categories of accepted research are displayed in the journal matrix section of this website.

Authors who would like to discuss the potential interest in submitting a manuscript may contact Editorial staff

### h-index

Articles published in **Journal of Management Information and Decision Sciences** have been cited by esteemed scholars and scientists all around the world. **Journal of Management Information and Decision Sciences** has got h-index 22, which means every article in Journal of Management Information and Decision Sciences has got 22 average citations.

### Volume Selector

<b>2023</b>					
Volume 26, Issue 2		Volume 26, Issue 1			
Volume 26, Special Issue 3		Volume 26, Special Issue 2		Volume 26, Special Issue 1	
<b>2022</b>					
Volume 25, Issue 6		Volume 25, Issue 5		Volume 25, Issue 4	
Volume 25, Issue 2		Volume 25, Issue 1			
Volume 25, Special Issue 6	Volume 25, Special Issue 5	Volume 25, Special Issue 4	Volume 25, Special Issue 3	Volume 25, Special Issue 2	Volume 25, Special Issue 1
<b>2021</b>					
Volume 24, Issue 6		Volume 24, Issue 5		Volume 24, Issue 3	
Volume 24, Issue 2		Volume 24, Issue 1			
Volume 24, Special Issue 6 (Title: Financial Risk Analysis and Management)	Volume 24, Special Issue 5 (Title: Digital Banking and Marketing Information System)	Volume 24, Special Issue 4 (Title: Economic Decision Making and Operations Research)	Volume 24, Special Issue 3 (Title: Innovative Applications of Emerging Technologies and Management)	Volume 24, Special Issue 2 (Title: Information System And Decision Making)	Volume 24, Special Issue 1 (Title: MIS for Today's Business)
<b>2020</b>					
Volume 23, Special Issue		Volume 23, Issue 5		Volume 23, Issue 3	
Volume 23, Issue 2		Volume 23, Issue 1			

### Editor-in-Chief

**Chair Professor Wing-Keung Wong**  
Department of Finance, College of Management, Asia University, Taichung, Taiwan. Email: [decisionscience@businessjournals.org](mailto:decisionscience@businessjournals.org) or [decisionsci@peerjournal.org](mailto:decisionsci@peerjournal.org)

You may submit manuscripts online at: [www.abacademies.org/submissions/journal-of-management-information-and-decision-sciences.html](http://www.abacademies.org/submissions/journal-of-management-information-and-decision-sciences.html)

By E-mail: [decisionscience@alliedbusiness.org](mailto:decisionscience@alliedbusiness.org) and/or [decisionsci@peerjournal.org](mailto:decisionsci@peerjournal.org)

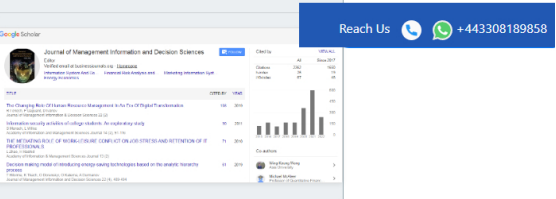
**H Index: 7**

**Scopus | Cite Score | 2020 : 1.2 | CiteScoreTracker 2021 : 1.0 (Updated monthly)**

**Google scholar citation report**

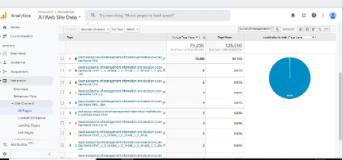
**Citations : 2362**

Journal of Management Information and Decision Sciences received 2362 citations as per google scholar report

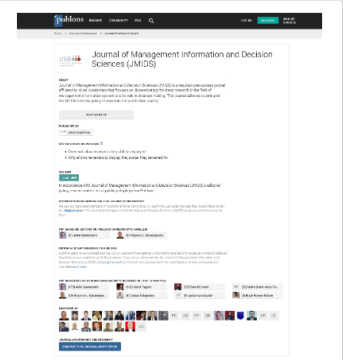


Reach Us [+443308189858](https://www.whatsapp.com/channel/00299a61111111111111)

### 50+ Million Readerbase



**Journal of Management Information and Decision Sciences peer review process verified at publons**



### Abstracted/Indexed in

- > Open J Gate
- > JournalTOCs
- > China National Knowledge Infrastructure (CNKI)
- > CiteFactor
- > Scimago
- > Directory of Research Journal Indexing (DRJI)
- > OCLC- WorldCat
- > Publons
- > Scientific Indexing Services (SIS)
- > Google Scholar
- > Euro Pub
- > Cengage Gale

[Read More](#)

<p><b>2019</b></p> <p><a href="#">Volume 22, Issue 4</a>   <a href="#">Volume 22, Issue 3</a>   <a href="#">Volume 22, Issue 2</a>   <a href="#">Volume 22, Issue 1</a></p>
<p><b>2018</b></p> <p><a href="#">Volume 21, Issue 1</a></p>
<p><b>2017</b></p> <p><a href="#">Volume 20, Special Issue</a></p>
<p><b>2016</b></p> <p><a href="#">Volume 19, Issue 1</a></p>
<p><b>2015</b></p> <p><a href="#">Volume 18, Issue 2</a>   <a href="#">Volume 18, Issue 1</a></p>
<p><b>2014</b></p> <p><a href="#">Volume 17, Issue 2</a>   <a href="#">Volume 17, Issue 1</a></p>
<p><b>2013</b></p> <p><a href="#">Volume 16, Issue 2</a>   <a href="#">Volume 16, Issue 1</a></p>
<p><b>2012</b></p> <p><a href="#">Volume 15, Issue 2</a>   <a href="#">Volume 15, Issue 1</a></p>
<p><b>2011</b></p> <p><a href="#">Volume 14, Issue 2</a>   <a href="#">Volume 14, Issue 1</a></p>
<p><b>2010</b></p> <p><a href="#">Volume 13, Issue 2</a>   <a href="#">Volume 13, Issue 1</a></p>
<p><b>2009</b></p> <p><a href="#">Volume 12, Issue 1</a></p>
<p><b>2008</b></p> <p><a href="#">Volume 11, Issue 2</a>   <a href="#">Volume 11, Issue 1</a></p>
<p><b>2007</b></p> <p><a href="#">Volume 10, Issue 2</a>   <a href="#">Volume 10, Issue 1</a></p>
<p><b>2006</b></p> <p><a href="#">Volume 9, Issue 2</a>   <a href="#">Volume 9, Issue 1</a></p>
<p><b>2005</b></p> <p><a href="#">Volume 8, Issue 2</a>   <a href="#">Volume 8, Issue 1</a></p>

<b>Available From</b> 1998 - 2023	<b>Volumes</b> 26
<b>Issues</b> 27	<b>Articles</b> 486

**Journal of Management Information and Decision...**

Q2 Information Systems and Management best quartile

SJR 2020 0.28

powered by scimagojr.com

**Tweets from @ManagementInfo4**

**Management Infor...** @Manage... · Mar 27

Building a Secure #Enterprise Model for Cloud #Computing Environment  
For more info: [bit.ly/3XpUwAd](https://bit.ly/3XpUwAd)  
Submission opens at: [decisionsci@peerjournal.org](mailto:decisionsci@peerjournal.org)

**Management Infor...** @Manage... · Mar 23

The #Future of Sustainability Reporting #Environmental

## 2004

[Volume 7, Issue 2](#)

[Volume 7, Issue 1](#)

## 2003

[Volume 6, Issue 1](#)

## 2002

[Volume 5, Issue 1](#)

## 2001

[Volume 4, Issue 1](#)

## 2000

[Volume 3, Issue 2](#)

[Volume 3, Issue 1](#)

## 1999

[Volume 2, Issue 2](#)

[Volume 2, Issue 1](#)

## 1998

[Volume 1, Issue 2](#)

[Volume 1, Issue 1](#)

Get the App



## Relevant Topics

[Arsenic Scientific Journals](#)

[Astrobiology-Group-Journals](#)

[Astrobiology-open-access](#)

[Astronomy-Group-Journals](#)

[Astrophysics Articles](#)

[Astrophysics Articles Open Access](#)

[Astrophysics Online](#)

[Astrophysics Open Access](#)

[Bioinsecticides Open Access Journals](#)

[Bioinsecticides Peer Reviewed Journals](#)

[Carcinogenesis Peer Review Journals](#)

[Child Social Psychology](#)

[Coastal-zone Online Journals](#)

[Computational Biology-open-access-journals](#)

[Cosmology-open-access-journals](#)

[Defense Journals](#)

[Disaster Science Review Journals](#)

[Domestic Violence-Open Access Journals](#)

[Energy Efficiency](#)

[Equity-Research Articles](#)

[Fumigation Impact Factor](#)

[Fumigation Open Access Journals](#)

[Geographic Information System Impact Factor](#)

[Geographic Information System Innovations](#)

[Geosciences Online Publishing Journals](#)

[Geosciences Scholarly Journals](#)

[Global Warming Open Access Articles](#)

[International-Cosmology-Journals](#)

[Jurisprudence-Top Journals](#)

[Management Engineering - Open Access Journals](#)

[Arsenic Scientific Journals](#)

[Astrobiology-Online Journals](#)

[Astrobiology-open-access](#)

[Astronomy-group-Journals-List](#)

[Astrophysics Articles](#)

[Astrophysics Future](#)

[Astrophysics Online](#)

[Bioinsecticides Impact Factor](#)

[Bioinsecticides Open Access Journals](#)

[Bioinsecticides Top Journals](#)

[Carcinogenesis Peer Review Journals](#)

[Climate Change Scholarly Journal](#)

[Coastal-zone Online Journals](#)

[Cosmology-Group-Journals](#)

[Cosmology-open-access-journals](#)

[Defense Top Journals](#)

[Disaster Science Review Journals](#)

[Ecosystem-Open-Access-Articles](#)

[Energy Efficiency](#)

[Equity-Scientific Journals](#)

[Fumigation Impact Factor](#)

[Fumigation Top Journals](#)

[Geographic Information System Impact Factor](#)

[Geographic Information System Online Publishing Journals](#)

[Geosciences Online Publishing Journals](#)

[Geostatistics Journals](#)

[Global Warming Open Access Articles](#)

[International-Space-Research-Journals](#)

[Jurisprudence-Top Journals](#)

[Maritime Security Operations Review Articles](#)

[Astrobiology-Group-Journals](#)

[Astrobiology-Online Journals](#)

[Astronomy-Group-Journals](#)

[Astronomy-group-Journals-List](#)

[Astrophysics Articles Open Access](#)

[Astrophysics Future](#)

[Astrophysics Open Access](#)

[Bioinsecticides Impact Factor](#)

[Bioinsecticides Peer Reviewed Journals](#)

[Bioinsecticides Top Journals](#)

[Child Social Psychology](#)

[Climate Change Scholarly Journal](#)

[Computational Biology-open-access-journals](#)

[Cosmology-Group-Journals](#)

[Defense Journals](#)

[Defense Top Journals](#)

[Domestic Violence-Open Access Journals](#)

[Ecosystem-Open-Access-Articles](#)

[Equity-Research Articles](#)

[Equity-Scientific Journals](#)

[Fumigation Open Access Journals](#)

[Fumigation Top Journals](#)

[Geographic Information System Innovations](#)

[Geographic Information System Online Publishing Journals](#)

[Geosciences Scholarly Journals](#)

[Geostatistics Journals](#)

[International-Cosmology-Journals](#)

[International-Space-Research-Journals](#)

[Management Engineering - Open Access Journals](#)

[Maritime Security Operations Review Articles](#)

management engineering - Open Access Journals  
Military Science Impact Factor  
Nanostructures  
Operations Management - Open Access Journals  
Remote Sensing Open Access Articles  
Robotics For Applications  
Robotics In Medical Field  
Scholarly Open Access Astrophysics Journals  
Simulation - Scientific Journals  
Synthetic Biology Companies  
Synthetic Biology Future Innovations  
Top Open Access Research Journals

marine security operations research articles  
Military Science Impact Factor  
Open Access Astrophysics  
Operations Management - Open Access Journals  
Robotics Applications  
Robotics For Applications  
Scholarly Microwave Technology Journal  
Scholarly Open Access Astrophysics Journals  
Space-Research-Peer-review Journals  
Synthetic Biology Companies  
Theoretical Science Uses  
Top Open Access Research Journals

marine security operations research articles  
Nanostructures  
Open Access Astrophysics  
Remote Sensing Open Access Articles  
Robotics Applications  
Robotics In Medical Field  
Scholarly Microwave Technology Journal  
Simulation - Scientific Journals  
Space-Research-Peer-review Journals  
Synthetic Biology Future Innovations  
Theoretical Science Uses  
Top Open Access Research Journals





## Editorial Board

Journal of Management Information and Decision Sciences (JMIDS) is a reputable open access journal that is affiliated with the Allied Business Academies.

The Journal focuses on disseminating the latest research in the fields of management information system and its role in decision making, as well as their relationships to cognate disciplines, including Economics, Finance, Management, Management Science, Marketing, Statistics, Operations Research, and Engineering.

The Journal adheres to a stringent double blind review policy to maintain publication quality.

With an acceptance of rate of 25% of submitted manuscripts, the journal encourages recent discoveries and innovations comprising theoretical, conceptual and empirical research in Information Systems, Decision Sciences, and cognate disciplines.

JMIDS caters to the needs of leading business executives and managerial force that is actively involved in management and decision making.

The Journal also publishes extensively for managerial IT professionals, and industry practitioners in the fields of business management, information systems, and decision analysis.

Sponsored by the Academy of Management Information and Decision Sciences, JMIDS encompasses a wide spectrum of topics in this field including, but not limited to Sustainable Supply Chain Management, Collective Decision Making, Multi-Attribute Utility Theory, Information System and Decision Making, Fuzzy Models of Decision Making, Integer and Binary Programming, Linear Programming, Markov Processes, Mathematical Programming, Financial Risk Analysis and Management, Multi-Tier Supply Chain Management, Dynamic and Naturalistic Decision Making, General Decision Making, Applications of Decision Aids, Behavioral Aspects of Decision Making, International Decision Making, North American Decision Making Framework, Resource Dependence Theory, Environmental Management Systems, Marketing Information Systems, Financial Decision Making, Economic Decision Making, Energy Economics and Finance, Operations Research, and Engineering.

Further details on the types of manuscripts published and the categories of accepted research are displayed in the journalmatrix section of the website.

Authors who would like to discuss potential interest in submitting a manuscript may contact Editorial staff

### Editor-in-Chief

**Chair Professor Wing-Keung Wong**

Department of Finance, College of Management, Asia University, Taichung, Taiwan. Email: [decisionscience@businessjournals.org](mailto:decisionscience@businessjournals.org) or [decisionsci@peerjournal.org](mailto:decisionsci@peerjournal.org)

### Co-Editors-in-Chief

**University Distinguished Professor Chia-Lin Chang**

Department of Applied Economics & Finance, National Chung Hsing University, Taiwan

**Dr Sang-Bing Tsai**

University of Electronic Science and Technology of China, Management School, Guangdong, China & Civil Aviation University of China, Tianjin, China

Reach Us   +443308189858

### Chair, Editorial Board

**University Distinguished Chair Professor Michael McAleer**

Department of Quantitative Finance, National Tsing Hua University, Taiwan

### Associate Editor..

### International Advisory Board

**Professor Moawia Alghalith**

University of the West Indies, Trinidad and Tobago

**Honorary Professor David Allen**

Department of Mathematics, University of Sydney, Australia

**Professor Teodosio Perez Amaral**

Department of Quantitative Economics, Complutense University of Madrid, Spain

**Professor Wai Sum Chan**

Department of Banking and Finance, Chinese University of Hong Kong, China

**Professor Sandra Vandermerwe, Extraordinary Professor**

Gordon Institute of Business Studies (GIBS), University of Pretoria, Johannesburg, South Africa

### Editorial Board

**Dragan Ciscic**

Professor, University of Rijeka, Croatia

**Svajone Bekesiene**

General Jonas Zemaitis Military Academy of Lithuania, Silo 5a, LT-10322 Vilnius, Lithuania

### Review Board

**Professor Dr. Sergey E. Barykin, Professor**

Peter the Great St. Petersburg Polytechnic University, Institute of Industrial Management, Economics and Trade, Graduate School of Service and Trade (Russia), Deputy Director for Scientific Research and Development,

### Editorial Review Board

**Dr.S.Saiganesh, Professor, Dayananda Sagar Business School**

Professor, Dayananda Sagar Business School

**Professor Mohd Sanusi Magaji FMESRI, PhD**

Dean, Postgraduate School, Maryam Abacha American University of Nigerian Republic

**Tapan R. Mohanty, Professor at National Law Institute University**

Dean, Department of Distance Education and Chairperson of Centre for Socio-Legal Studies

**Dr. Latha Lavanya, Associate Professor**

Associate Professor at MEASI Institute of Management

**Dr. Aidin Salamzadeh**  
Assistant professor, Faculty of Management, University of Tehran, Islamic Republic of Iran

**Dr. Ratish C Gupta**  
Daly College Business School

**Dr. Muhammad Salman Shabbir**  
Universiti Sains Malaysia, USM Penang, Malaysia

**K. M. Anwarul Islam**  
The Millennium University

**Man Fung LO**  
The Hong Kong Polytechnic University

**Dr. Chia-Huei Wu, Assistant Professor**  
Minghsin University of Science Technology, Taiwan

**Prof. Nassr Saleh Mohamad Ahmad**  
University of Gharyian

**Professor Suresh Deman**  
Centre for Economics & Finance

**Mohamed Mugableh**  
Irbid National University

**Maria Silvia Avi**  
Universita Ca' Foscari

**Mohammed M. Kakanda**  
Modibbo Adama University of Technology Yola

**Nurul Mohammad Zayed**  
Daffodil International University

**Professor Mark Wohar**  
University of Nebraska

**Francisco Fernando Ribeiro Ramos**  
Coimbra Business School, Coimbra

**Steve Moss**  
Georgia State University

**I-Lin Huang**  
Langston University

**Dr. Sumon Das**  
University of Dhaka

**Dr. Grigorios L. Kyriakopoulos**  
University of Athens (NTUA)

**Associate Professor Dr. Muthaloo Subramaniam**  
Dean, Faculty of Business, Management and Information Technology, Asia Metropolitan University, Johor, Malaysia

**Professor Xu Guo**  
School of Statistics, Beijing Normal University

## Relevant Topics

[Arsenic Scientific Journals](#)

[Astrobiology-Group-Journals](#)

[Astrobiology-open-access](#)

[Astronomy-Group-Journals](#)

[Astrophysics Articles](#)

[Astrophysics Articles Open Access](#)

[Astrophysics Online](#)

[Astrophysics Open Access](#)

[Bioinsecticides Open Access Journals](#)

[Bioinsecticides Peer Reviewed Journals](#)

[Carcinogenesis Peer Review Journals](#)

[Child Social Psychology](#)

[Coastal-zone Online Journals](#)

[Computational Biology-open-access-journals](#)

[Cosmology-open-access-journals](#)

[Defense Journals](#)

[Disaster Science Review Journals](#)

[Domestic Violence-Open Access Journals](#)

[Energy Efficiency](#)

[Equity-Research Articles](#)

[Fumigation Impact Factor](#)

[Fumigation Open Access Journals](#)

[Geographic Information System Impact Factor](#)

[Arsenic Scientific Journals](#)

[Astrobiology-Online Journals](#)

[Astrobiology-open-access](#)

[Astronomy-group-Journals-List](#)

[Astrophysics Articles](#)

[Astrophysics Future](#)

[Astrophysics Online](#)

[Bioinsecticides Impact Factor](#)

[Bioinsecticides Open Access Journals](#)

[Bioinsecticides Top Journals](#)

[Carcinogenesis Peer Review Journals](#)

[Climate Change Scholarly Journal](#)

[Coastal-zone Online Journals](#)

[Cosmology-Group-Journals](#)

[Cosmology-open-access-journals](#)

[Defense Top Journals](#)

[Disaster Science Review Journals](#)

[Ecosystem-Open-Access-Articles](#)

[Energy Efficiency](#)

[Equity-Scientific Journals](#)

[Fumigation Impact Factor](#)

[Fumigation Top Journals](#)

[Geographic Information System Impact Factor](#)

[Astrobiology-Group-Journals](#)

[Astrobiology-Online Journals](#)

[Astronomy-Group-Journals](#)

[Astronomy-group-Journals-List](#)

[Astrophysics Articles Open Access](#)

[Astrophysics Future](#)

[Astrophysics Open Access](#)

[Bioinsecticides Impact Factor](#)

[Bioinsecticides Peer Reviewed Journals](#)

[Bioinsecticides Top Journals](#)

[Child Social Psychology](#)

[Climate Change Scholarly Journal](#)

[Computational Biology-open-access-journals](#)

[Cosmology-Group-Journals](#)

[Defense Journals](#)

[Defense Top Journals](#)

[Domestic Violence-Open Access Journals](#)

[Ecosystem-Open-Access-Articles](#)

[Equity-Research Articles](#)

[Equity-Scientific Journals](#)

[Fumigation Open Access Journals](#)

[Fumigation Top Journals](#)

[Geographic Information System Innovations](#)



Geographic Information System Innovations

Geosciences Online Publishing Journals

Geosciences Scholarly Journals

Global Warming Open Access Articles

International-Cosmology-Journals

Jurisprudence-Top Journals

Management Engineering - Open Access Journals

Military Science Impact Factor

Nanostructures

Operations Management - Open Access Journals

Geographic Information System Online Publishing Journals

Geosciences Online Publishing Journals

Geostatistics Journals

Global Warming Open Access Articles

International-Space-Research-Journals

Jurisprudence-Top Journals

Maritime Security Operations Review Articles

Military Science Impact Factor

Open Access Astrophysics

Operations Management - Open Access Journals

Geographic Information System Online Publishing Journals

Geosciences Scholarly Journals

Geostatistics Journals

International-Cosmology-Journals

International-Space-Research-Journals

Management Engineering - Open Access Journals

Maritime Security Operations Review Articles

Nanostructures

Open Access Astrophysics

Remote Sensing Open Access Articles

## Articles in issue: 6 | Volume: 25 | Month: December | Year: 2022

### Internet of things and workers engagement of Asia Cell Telecommunications Company: Iraq

**Author(s):** Al-Hadrawi, B.K., & Jawad, A. R.

[Abstract](#) [Full-Text](#) [PDF](#)

### Decision making in uncertainty and risky environment

**Author(s):** Bejleri, E., Berberi, A., & Memaj, G.

[Abstract](#) [Full-Text](#) [PDF](#)

### Design and development of an ocr system that can convert both amharic and english based images and scanned pdf files into editable content

**Author(s):** Beshah, T., & Asfawosen, A.

[Abstract](#) [Full-Text](#) [PDF](#)

### Job satisfaction among non-academic staff in Kuwait

**Author(s):** Alzougool, B., & Awawdeh, L.

[Abstract](#) [Full-Text](#) [PDF](#)

### Covid-19 pandemic and consumer protection issues in Nigeria: rethinking the current institutional apparatus for sustainability

**Author(s):** Enyia, J.O., & Akpanke, S.A.

[Abstract](#) [Full-Text](#) [PDF](#)

### The use of HASH-based algorithm calculation dependent on execution assessment framework to decide understudy fulfillment with educating staff

**Author(s):** Prehanto, D.R., Permadi, G.S., & Indriyanti, A.D.

[Abstract](#) [Full-Text](#) [PDF](#)

### Dimension Of Reward System On Employeesá?? Commitment: A Tertiary Institution View

**Author(s):** Ayeni Adebajji, Peter Fred, Uwagwe Bobmanuel, Olojede, Ibukunoluwa Bose, Fayemi Grace Oyefunkel, Ajagbe Grace & Osazuwa Mabel

[Abstract](#) [Full-Text](#) [PDF](#)

### A Deep Learning Based Clinical Decision Support System For Malaria Diagnosis and Detection

**Author(s):** Alamu Femi O, Abiodun Adeyinka O., & Jinadu Ahmad Adekunle

[Abstract](#) [Full-Text](#) [PDF](#)

### Impact of The Pandemic on Families From Vulnerable Backgrounds

**Author(s):** Raul Prada Nunez, William Avendano Castro & Cesar Augusto Hernandez Suarez

[Abstract](#) [Full-Text](#) [PDF](#)

### Networks of job opportunities in the literature from 2019 to 2022

**Author(s):** Enrique Martinez Munoz, Cruz Garcia Lirios & Victor Hugo Merino Cordoba

[Abstract](#) [Full-Text](#) [PDF](#)



**ALLIED BUSINESS  
ACADEMIES**

Follow Us.



#### Quick Links

- [Academies](#)
- [Journals](#)
- [Matrix](#)
- [Proceedings](#)
- [Guidelines](#)
- [About Us](#)
- [Member Services](#)

#### Contact Info

- [Allied Business Academies](#)  
40 Bloomsbury Way Lower Ground Floor  
London, United Kingdom  
WC1A 2SE
- (828) 214-3944
- [contact@abacademies.org](mailto:contact@abacademies.org)

# THE USE OF HASH-BASED ALGORITHM CALCULATION DEPENDENT ON EXECUTION ASSESSMENT FRAMEWORK TO DECIDE UNDERSTUDY FULFILLMENT WITH EDUCATING STAFF

**Dedy Rahman Prehanto, Universitas Negeri Surabaya**  
**Ginanjar Setyo Permadi, Universitas Hasyim Asy'ari**  
**Aries Dwi Indriyanti, Universitas Negeri Surabaya**

## ABSTRACT

*Evaluation of satisfaction is an act of assessing the performance of teaching staff in carrying out their duties or responsibilities and being able to meet predetermined expectations. This study aims to build a system of student satisfaction on the performance of teaching staff and implement a hash based algorithm to help process the satisfaction evaluation assessment. The hash based algorithm generates information for the next iteration in the current iteration, so that it can efficiently generate large itemset and can be a solution in determining the frequent itemset from candidate itemset optimally. In this study, the data is processed using a hash-based algorithm in order to obtain results in the form of frequent itemsets that are useful in forming association rules. From the results of the formation of these association rules, it can be analyzed the assessment pattern of the teaching staff, in order to be a morale booster, or improve the quality of the teaching staff. The results showed that the index of the level of student satisfaction on the performance of teaching staff in the information system design course ranged from 54% to 100%. This means that students are satisfied at the moderate to very good level.*

**Keywords:** Association Rules; Hash Based; Student Satisfaction; Teacher Performance.

## INTRODUCTION

At present the community's need for formally held education is increasing, especially in universities, this can make universities as producers of quality human resources. Improving the quality of a university is influenced by the quality of the university. Factors that influence the quality of education are teaching staff who play a very important role in producing skilled and quality graduates (Kistofer et al., 2019).

In this study, the instrument of student satisfaction on the performance of teaching staff was taken from the Quality Assurance Institute of Hasyim As'ari University using four criteria, namely, learning preparation, learning process, learning evaluation and scientific attitude. Satisfaction is a positive attitude or perception of students towards products or services that have met their expectations, students will feel dissatisfied if their expectations have not been achieved. A service has the potential to meet or not the expectations of students. Assessment of the level of student satisfaction is one aspect of the assessment of the quality of educational services which has an important meaning for the continuity of the education system. The results of these assessments can be used to guide a better education system (Ghazanfari et al., 2020).

The results of data processing in a simple way do not get effective results because of the large volume of data processed. Utilization of information and knowledge contained in the amount of data is called data mining (Mashuri et al., 2019). Data mining is a series of processes that use statistical, mathematical and artificial intelligence techniques to convert useless data into data that contains valuable and useful information from large databases (Dzakiyullah et al., 2018; Aries Dwi Indriyanti et al., 2019a; Wardhana et al., 2019). Data mining is not a new field, data mining inherits many aspects and techniques from existing fields of science (Prehanto et al., 2020).

One of the data mining algorithms that is often used in association rules is a hash based algorithm. The hash based algorithm produces information for the next iteration in the current iteration, so that it can efficiently generate large itemset and can be a solution in determining the frequent itemset from candidate itemset optimally (Prehanto et al., 2019). The hash based algorithm uses hashing techniques to filter out itemsets that are not important for the next itemset generation (Permadi et al., 2019).

## MATERIALS AND METHODS

### Data Mining

Data mining is a process that uses statistical, mathematical, artificial intelligence, and machine learning techniques to extract and identify useful information and related knowledge from large databases (Zahrotun et al., 2018). Data mining is divided into several based on the tasks that can be performed, namely (Si et al., 2019):

1. Description: The analysis simply wants to try to find a way to describe the patterns and trends contained in the data. Patterns and tendencies often provide possible explanations for a pattern or trend.
2. Estimate: In the estimation process, it tends to be numerical rather than nominal. The model is built using a complete record that provides the value of the target variable as the predicted value. Examples of these algorithms are Linear Regression and Neural Network.
3. Prediction: In the prediction, the data used is time series data and the final result value is used for some time to come.
4. Classification: In the classification of the target variable in the form of categorical data. An example of classification is people's income is classified into three groups, namely high, medium and low income. The classification algorithms are Naïve Bayes, K-Nearest Neighbor, and C4.5.
5. Clustering: Grouping of data or the formation of data in the same type. Clustering divides data into relatively equal groups. Examples of clustering algorithms are Fuzzy C-Means and Kmeans.
6. Association: Associations are used to find items that appear at the same time and look for relationships between one or two more in a data set. Examples of association algorithms are FP-Growth, Apriori and Hash Based (Hossain et al., 2019).

In this study the authors used association groups. Association is the process of processing data to find a combination of items that appear at one time (Indriyanti et al., 2019b).

### Association Rule

Association Rule is a process to find patterns of associative rules that meet the minimum requirements for support and the minimum requirements for confidence in the database. Association rule is a procedure to find the relationship between items in a specified dataset. Association rule includes two stages(Nomura et al., 2020). The stages are:

1. Look for the most frequent combination of an item set that has support above the minimum support. This is called the frequent itemset.
2. Defines association rules from frequent itemset that have been created based on the minimum support and minimum confidence rules.

Generally, there are two measures used in determining an association rule, namely support and confidence. These two measures will later be useful in determining the attractive association rule, which is to be compared with a predetermined limit. The limitation consists of minsup and minconf (Prehanto et al., 2019).

### Minimum Support

Minimum support is a measure or value that must be met as a limit on the frequency of occurrence (support count) of the entire dominance value of an item or itemset (support) in the entire transaction.

$$\text{Support A} = \frac{\text{Amount Transaction of containing A}}{\text{Total Transaction}} \times 100\% \quad (2.1)$$

To find the support value of 2 items is as follows:

$$\text{Support (A,B)} = \frac{\text{Amount Transaction of containing A and B}}{\text{Total Transaction}} \times 100\% \quad (2.2)$$

### Minimum Confidence

The minimum confidence value is a parameter that defines the minimum level of a relationship value between items (confidence) that must be met in order to find quality rules. The confidence value is obtained by the following formula:

$$\text{Confidence} = P(A|B) = \frac{\text{Amount Transaction of containing A and B}}{\text{Amount Transaction of containing A}} \times 100\% \quad (2.3)$$

### Hash Based Algorithm

Hash based algorithm is the development of a priori algorithm which is used to determine rule association. Hash based algorithm can be a solution to overcome the problem of determining the frequent k-itemset from a large number of k-itemset candidates. By using hashing technique, the scanned k-itemset candidates will be entered into the bucket in the hash table. From the bucket, it will be used to search for frequent (k+1)-itemsets so that the database scan is only done once in the first iteration (Siregar et al., 2021). This algorithm generates information for the next iteration in the current iteration. The technique used in the hash based algorithm is a hashing technique to filter out itemsets that are not important for the next itemset generation. When the support count for candidate itemsets is calculated by browsing the database, this algorithm collects information about the (k+1)-itemsets by means of all possible (k+1)-itemsets being hashed into a hash table using a hash function. The bouquet in each hash table contains the number of times the itemset has been hashed into the bouquet (Imdadi & Rizvi, 2011). Based on the hash table, then a bit vector will be built, where the bit vector is worth 1 if the number in the bouquet is greater than or equal to the minimum support. In the candidate generation section, after calculating  $C_k = L_{k1} * L_{k-1}$ , each k-itemset is checked whether the itemset is hashed into a bouquet that has a bit vector equal to 1. Otherwise, the vector will be omitted or not used. The use of a hash table reduces the number of candidate k-itemsets, thereby reducing the computational value of generating

the itemset in each iteration (Naresh & Suguna, 2019). The process of hashing the candidate 1-itemset using the formula (Naresh & Suguna, 2019):

$$h(x) = (\text{order of item } x) \bmod n \quad (2.4)$$

Where, h = bucket address in hash table

n = multiple addresses ( $n=2.m+1$ , m=total number of items)

Process hashing against candidates 2-itemset:

$$h(k) = ((\text{order of } x) * 10 + \text{order of } y) \bmod n \quad (2.5)$$

In the calculation of the 2-itemset formula, a collision will be found (there is more than 1 itemset that has the same hash address). When a collision occurs, it is immediately checked to find the address of an empty bucket. After checking, if an indication is found that the hash table is half filled, it is necessary to rehash it with 2 times the number of addresses before. To solve this problem, a different formula is used, namely (Ali et al., 2019):

$$h(k) = ((\text{order of } x) * 10 + \text{order of } y) \bmod j \quad (2.6)$$

Where,

j : many addresses after adding ( $j=2*m+1$ ), m= the number of addresses in the hash table before adding)

Process hashing against candidates 3-itemset:

$$h(k) = ((\text{order of } x) * 100 + (\text{order of } y) * 10 + \text{order of } z) \bmod j \quad (2.7)$$

## RESULTS AND DISSCUSION

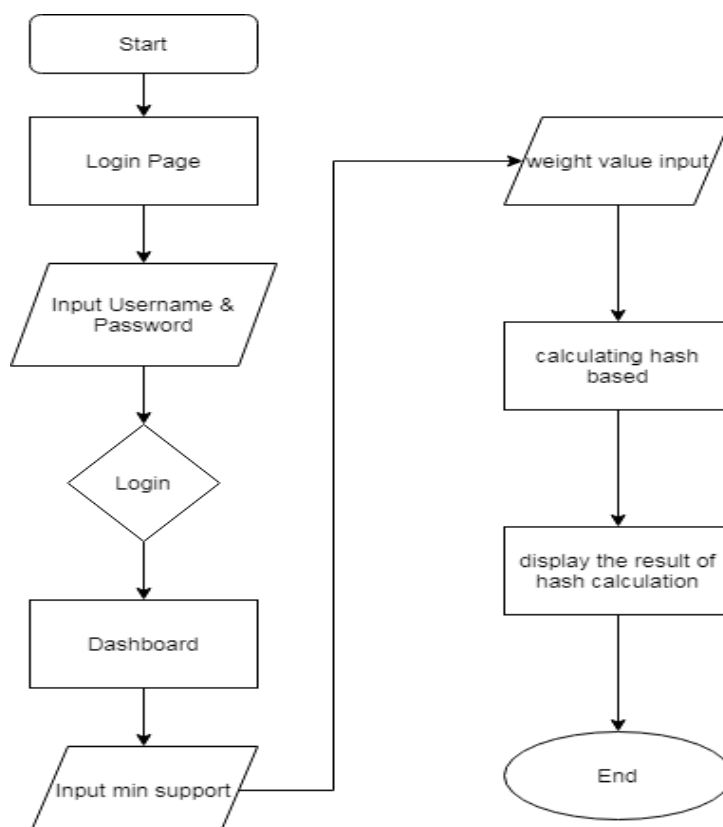
The instrument used in this study is intended to produce accurate data by using a Likert scale. The Likert scale is used to measure an attitude, opinion and perception of a person or group of people about a social phenomenon (Permadi et al., 2018). Selection of the right instrument is needed to obtain objective data and information. The instrument used in this study is an instrument for assessing the performance of teaching staff at Hasyim Asy'ari University (Table 1).

<b>Table 1</b>	
<b>TEACHER PERFORMANCE ASSESSMENT INSTRUMENT</b>	
No	Kind of service
	<b>A. Learning Preparation</b>
1	Submitting Semester Lecture Plans (RPS)
2	Submit a study agreement/contract
3	Number of attendance of substitute teachers/lectures
	<b>B. learning process</b>
4	Delivering lecture material clearly
5	Provide opportunities for students to ask questions / express opinions
6	Teachers' answers to students' questions related to lecture material materi
7	Lecture time according to Semester Credit Unit weight Kredit (SKS)
8	Keeping the class schedule according to the schedule determined majors / study programs
9	Optimal use of facilities and infrastructure
10	Return of Assignments and Mid-Semester Exams (UTS)
11	Suitability of lecture/practice materials, assignments, UTS and UAS
12	Delivering information on various source books/ textbooks/ handouts
13	Conducting tutoring / structured
14	Has a variety of up-to-date references
	<b>C. Learning Evaluation</b>



15	Objectivity in assessment: assignments, tests, and lecture participation
16	Punctuality in submitting grades
	<b>D. Scientific Attitude</b>
17	The attitude of openness of scientists and academics
18	Dress politely, neatly and appropriately
19	Easy to find for related consultation study
20	Ability to create a conducive atmosphere/ motivation suasana

The flowchart design of the student satisfaction system on the performance of the teaching staff can be seen in the Figure 1.



**FIGURE 1**

## **FLOWCHART DESIGN OF THE STUDENT SATISFACTION SYSTEM**

### **Pre-Processing Data**

This is the stage where data initialization is carried out before the data is processed using a hash based algorithm. The data initialization process is carried out by converting the initial data which is still in the form of assessment questionnaire data into data that is ready to be processed by a hash-based algorithm, the data that is ready to be processed can be called transaction data. The following is the initial data before the preprocessing stage is mapped in the Table 2.

The data used is assessment data on aspect 1 from one of the lecturers at Hasyim Asy'ari University, with a minimum support of 50% and a minimum confidence of 50%. The meaning of the numbers in Table 2 is the questionnaire rating scale of the teaching staff.

Table 2 FIRST DATA										
Question Answer	11	12	13	14	15	16	17	18	19	10
1	5	5	5	4	4	5	4	5	5	5
2	5	4	3	5	4	3	3	5	5	4
3	3	5	4	4	4	4	4	5	3	4
4	4	3	3	4	4	5	5	4	5	4
5	5	4	3	4	5	4	4	5	5	4
6	5	4	4	4	5	4	3	4	4	4
7	3	4	3	4	5	5	5	4	4	3
8	4	4	4	5	4	4	4	3	4	4
9	3	3	3	4	4	3	4	5	2	4
10	5	4	4	4	5	4	3	4	4	4
11	3	4	3	4	5	5	5	4	4	3
12	4	4	4	5	4	4	4	3	4	4
13	3	3	3	4	4	3	4	5	2	4
14	4	3	3	4	3	4	4	3	4	3
15	3	3	3	4	4	4	3	4	2	4
16	4	3	3	4	4	4	4	4	3	4
17	3	3	3	4	3	4	3	3	3	4
18	4	4	3	4	3	3	4	4	4	3
19	3	3	3	4	5	5	5	4	4	4
Question Answer	11	12	13	14	15	16	17	18	19	10
1	4	4	3	4	4	4	5	4	3	3
2	4	3	4	5	4	3	3	5	4	4
3	5	4	4	4	3	4	3	3	4	4
4	5	5	4	3	5	5	4	4	4	3
5	4	4	3	5	5	4	4	3	4	4
6	3	4	4	5	4	4	3	4	3	4
7	4	5	4	4	5	4	4	5	4	5
8	5	3	2	3	2	4	3	4	2	3
9	4	4	2	4	4	4	4	4	3	4
10	3	4	4	5	4	4	3	4	3	4
11	4	5	4	4	5	4	4	5	4	5
12	5	3	2	3	2	4	3	4	2	3
13	4	4	2	4	4	4	4	4	3	4
14	4	3	3	3	4	3	3	4	4	3
15	3	3	4	4	4	4	4	4	3	3
16	4	4	4	3	4	5	3	3	4	3
17	4	3	3	3	3	3	4	3	4	4
18	3	3	3	3	4	4	3	3	4	3
19	4	5	5	5	4	3	5	3	3	4

Very good=5; Good=4; Enough=3; Less=2; Very Less=1

After preprocessing, it will get ready-to-process data in the form of transaction data that is ready to be processed by a hash-based algorithm, which is tabled in Table 3.

### Calculation Hash-based Algorithm

The ready data that has been formed in the preprocessing stage is then processed using a hash based algorithm in order to obtain results in the form of frequent itemsets that are useful in forming association rules. There are 2 stages used in the hash-based algorithm, namely the formation of frequent items and the formation of association rules, here are the steps:

## Formation of Frequent Item Set Aspect 1

The formation of frequent itemset is the main stage in the association rules, because at this stage the formation of itemsets is carried out which includes mapping and itemset combinations, itemset hashing addressing, itemset pruning, which from the whole process is influenced by minimum support. In the formation of frequent itemset, transaction data obtained from the preprocessing stage is required which is mapped in Table 3.

Transaction ID	Item	Transaction ID	Item
T1	SB,SB,SB	T13	B,K,C
T2	SB,B,C	T14	C,C,B
T3	C,SB,B	T15	C,C,B
T4	B,C,C	T16	C,C,C
T5	SB,B,C	T17	B,C,C
T6	SB,B,B	T18	C,C,C
T7	C,B,C	T19	B,B,C
T8	B,B,B	T20	C,C,C
T9	C,C,C	T21	B,B,SB
T10	B,C,C	T22	K,C,C
T11	SB,B,B,	T23	C,C,C
T12	SB,C,B	T24	C,C,B

### Itemset Mapping (1-itemset)

From 24 transaction data, 4 itemsets were obtained which are tabled in Table 4.

No	Itemset
1	B
2	C
3	K
4	SB

### Hashing Addressing (1-itemset)

To perform hasing, each itemset is ordered by order of items in the data. The order of items in the data is used as the first address sequence before further processing. For more details can be seen in Table 5.

Order of item	Itemset
1	B
2	C
3	K
4	SB

After sorting the 1-itemset itemset, then the hashing process is carried out by entering each itemset into the bucket in the hash table using equation 2.4, namely  $h(x) = (\text{order of item } x) \bmod n$  dengan  $n=9$ .

<b>Table 6</b> <b>PROSES HASHING 1-ITEMSET</b>		
<b>Itemset</b>	<b>Process</b>	<b>Address</b>
B	$h(B) = (1) \bmod 9$	1
C	$h(B) = (2) \bmod 9$	2
K	$h(C) = (3) \bmod 9$	3
SB	$h(SB) = (4) \bmod 9$	4

### Trimming Item Set (1-itemset)

Itemset pruning is used to filter itemsets that match the specified minimum support, which is 50% of the transaction data or equal to 12 pieces, if less than 12 items then the itemsets will be removed and not used in the next iteration. The following itemsets will be carried out in the 1-itemset pruning process, which can be seen in the Table 6.

<b>Table 7</b> <b>TABLE JOIN TRIMMING</b>	
<b>Item set</b>	<b>Count</b>
B	17
C	20
K	2
SB	7

After trimming, the data from the trimming will be generated as shown in Table 7.

<b>Table 8</b> <b>PRUNING RESULTS TABLE</b>	
<b>itemset</b>	<b>count</b>
B	17
C	20
K	2
SB	7

With the pruning results obtained as shown in Table 8, there are several itemsets that meet the minimum support, so it can be continued to the next stage, by generating the itemset again, namely 2-itemset.

### Itemset Mapping (2-Itemset)

The 4 itemsets in the first iteration (1-itemset) 2 itemsets were obtained that passed the second iteration (2-itemset), and a combination process was carried out which resulted in 1 itemset (Table 9).

<b>Table 9</b> <b>ITEMSET MAPPING 2-ITEMSET</b>	
<b>No</b>	<b>Itemset</b>
1	B,C

### Addressing Hashing (2-itemset)

Then the hashing process is carried out on the 2-itemset itemset by entering each itemset into the bucket in the hash table. The hashing process on itemsets that have more than

one itemset (1-itemset) will use equation 2.5, namely  $h(k) = ((\text{order of } x) * 10 + \text{order of } y) \bmod n$  with  $n=3$ .  $h(B,C) = ((1) * 10 + 2 \bmod 3 = 0$  After addressing, the address of the itemset 2 itemset is obtained which is tabled in Table 10.

Table 10 ADDRESS 2-ITEMSET ITERASI 1	
Itemset	Alamat
B,SB	0

After that, the frequent itemset collection process is carried out from the hash-based calculation process that has been carried out. Can be seen in the Table 11.

Table 11 FREQUENT ITEMSETS		
Item	Count	Support
B	17	$(17/24) \times 100 = 70\%$
C	20	$(20/24) \times 100 = 83\%$
B,C	14	$(14/24) \times 100 = 58\%$

## Establishment of Association Rules Aspects 2

The formation of Association rules is used to determine the relationship between the itemset, where the itemset in the form of a scale will show the relationship between which scales are said to be good from the assessment of the teaching staff concerned. From the results of the formation of these association rules, it can be analyzed the assessment pattern of the teaching staff, in order to be a morale booster, or improve the quality of the teaching staff. The results of the formation of association rules with a minimum 50% confidence can be seen in Table 12.

Table 12 ASOCIATION RULES			
Item	Support (XY)	Support (X)	Confidence
$B \geq C$	14	17	0,82
$C \geq B$	14	20	0,70

Repeat these steps on aspects 2,3 and 4.

Displays all the results of association rules from all aspects.

After all aspects are calculated using a hash based, then the next step is to collect all the association rules from the results of each existing aspect. The following is the result of the overall association rule (Tables 13-15).

Table 13 ASPECT ASSOCIATION RULES 1			
Item	Support (XY)	Support (X)	Confidence
$B \geq C$	14	17	0,82
$C \geq B$	14	20	0,7

<b>Table 14</b> <b>ASPECT ASSOCIATION RULES 2</b>			
<b>Item</b>	<b>Support (XY)</b>	<b>Support (X)</b>	<b>Confidence</b>
$B \geq C$	23	24	0,95
$B \geq SB$	14	24	0,58
$C \geq B$	23	23	1
$C \geq SB$	13	23	0,56
$SB \geq B$	14	14	1
$SB \geq C$	13	14	0,92
$B \geq C, SB$	13	24	0,54
$C \geq B, SB$	13	23	0,56
$SB \geq B, C$	13	14	0,92
$B, C \geq SB$	13	23	0,56
$B, SB \geq C$	13	14	0,92
$C, SB \geq B$	13	13	1

<b>Table 15</b> <b>ASPECT ASSOCIATION RULES 4</b>			
<b>Item</b>	<b>Support (XY)</b>	<b>Support (X)</b>	<b>Confidence</b>
$B \geq C$	18	21	0,85
$C \geq B$	18	21	0,85

As a result, 16 process association rules were formed based on predetermined parameters, namely a minimum support of 50% and a minimum of 50% confidence. In one of the rules formed, for example the rule in aspect 2:  $B \geq C$  with a 95% confidence value means that 95% of students who choose good also choose enough.

## CONCLUSION

Based on the research that has been done, the conclusion of this study is that the index of the level of student satisfaction on the performance of teaching staff in information system design courses ranges from 54% to 100%. This means that students are satisfied at the level of enough to very good.

## REFERENCES

- Ali, Y., Farooq, A., Alam, T.M., Farooq, M.S., Awan, M.J., & Baig, T.I. (2019). Detection of Schistosomiasis Factors Using Association Rule Mining. *IEEE Access*, 7, 186108-186114.
- Dzakiyullah, N.R., Saleh, C., Rina, F., & Fitra, A.R. (2018). Estimation of Carbon Dioxide Emission Using Adaptive Neuro-Fuzzy Inference System. *Journal of Engineering and Applied Sciences*, 13(6SI), 5196-5202.
- Ghazanfari, B., Afghah, F., & Taylor, M.E. (2020). Sequential Association Rule Mining for Autonomously Extracting Hierarchical Task Structures in Reinforcement Learning. *IEEE Access*, 8, 11782-11799.
- Hossain, M., Sattar, A.H.M.S., & Paul, M.K. (2019). Market basket analysis using apriori and FP growth algorithm. *2019 22nd International Conference on Computer and Information Technology, ICCIT 2019*, 1-6.
- Imdadi, N., & Rizvi, S.A.M. (2011). Using Hash based Bucket Algorithm to Select Online Ontologies for Ontology Engineering through Reuse. *International Journal of Computer Applications*, 28, 21-25.
- Indriyanti, A.D., Prehanto, D.R., Permadi, G.S., Mashuri, C., & Vitadiar, T.Z. (2019a). Using Fuzzy Time Series (FTS) and Linear Programming for Production Planning and Planting Pattern Scheduling Red Onion.

- The 4th International Conference on Energy, Environment, Epidemiology and Information System (ICENIS 2019).*
- Indriyanti, A.D., Prehanto, D.R., Prisma, I.G.L.E.P., Soeryanto, Sujatmiko, B., & Fikandda, J. (2019b). Simple Additive Weighting algorithm to aid administrator decision making of the underprivileged scholarship. *Journal of Physics: Conference Series*, 1402.
- Kistofer, T., Permadi, G.S., & Vitadiar, T.Z. (2019). Development of Digital System Learning Media Using Digital Learning System. *Proceedings of the 1st Vocational Education International Conference (VEIC 2019).*
- Mashuri, C., Mujiyanto, A.H., Sucipto, H., Arsam, R.Y., & Permadi, G.S. (2019). Production Time Optimization using Campbell Dudek Smith (CDS) Algorithm for Production Scheduling. *The 4th International Conference on Energy, Environment, Epidemiology and Information System (ICENIS 2019).*
- Naresh, P., & Suguna, R. (2019). Association rule mining algorithms on large and small datasets: A comparative study. *2019 International Conference on Intelligent Computing and Control Systems, ICCS 2019*, 587-592.
- Nomura, K., Shiraishi, Y., Mohri, M., & Morii, M. (2020). Secure Association Rule Mining on Vertically Partitioned Data Using Private-Set Intersection. *IEEE Access*, 8, 144458-144467.
- Permadi, G.S., Adi, K., & Gernowo, R. (2018). Application Mail Tracking Using RSA Algorithm As Security Data and HOT-Fit a Model for Evaluation System. *The 2nd International Conference on Energy, Environmental and Information System (ICENIS 2017).*
- Permadi, G.S., Vitadiar, T.Z., Kistofer, T., & Mujiyanto, A.H. (2019). The Decision Making Trial and Evaluation Laboratory (Dematel) and Analytic Network Process (ANP) for Learning Material Evaluation System. *The 4th International Conference on Energy, Environment, Epidemiology and Information System (ICENIS 2019).*
- Prehanto, D.R., Indriyanti, A.D., Nuryana, K.D., Soeryanto, S., & Mubarak, A.S. (2019). Use of Naïve Bayes classifier algorithm to detect customers' interests in buying internet token. *Journal of Physics: Conference Series*, 1402.
- Prehanto, D.R., Indriyanti, A.D., Permadi, G.S., Vitadiar, T.Z., & Jayanti, F.D. (2020). Library book modeling data using the association rule method with apriori algorithm in determining book placement and analysis of book loans. *International Journal of Advanced Science and Technology*, 29(5), 1244-1250.
- Si, H., Zhou, J., Chen, Z., Wan, J., Xiong, N.N., Zhang, W., & Vasilakos, A.V. (2019). Association Rules Mining among Interests and Applications for Users on Social Networks. *IEEE Access*, 7, 116014-116026.
- Siregar, A.H., Lydia, M.S., & Wage, S. (2021). Association Rule Analysis using CT-Pro and Hash-based Algorithm in Violence Case of Children. *In Proceedings of the International Conference on Culture Heritage, Education, Sustainable Tourism, and Innovation Technologies - CESIT*, 565-573.
- Wardhana, M.H., Samad, A., Basari, H., Syukor, A., Jaya, M., & Afandi, D. (2019). A Hybrid Model using Artificial Neural Network and Genetic Algorithm for Degree of Injury Determination. *International Journal of Innovative Technology and Exploring Engineering*, 9(2), 1357-1365.
- Zahrotun, L., Soyusiawaty, D., & Pattihua, R.S. (2018). The implementation of data mining for association patterns determination using temporal association methods in medicine data. *2018 International Seminar on Research of Information Technology and Intelligent Systems, ISRITI 2018.*

**Received:** 02-Aug-2022, Manuscript No. JMIDS-22-12409; **Editor assigned:** 03-Aug-2022, PreQC No. JMIDS-22-12401(PQ); **Reviewed:** 17-Aug-2022, QC No. JMIDS-22-12401; **Revised:** 19-Aug-2022, Manuscript No. JMIDS-22-12401(R); **Published:** 26-Aug-2022

# THE USE OF HASH-BASED ALGORITHM CALCULATION DEPENDENT ON EXECUTION ASSESSMENT FRAMEWORK TO DECIDE UNDERSTUDY FULFILLMENT WITH EDUCATING STAFF

**Dedy Rahman Prehanto, Universitas Negeri Surabaya**  
**Ginanjar Setyo Permadi, Universitas Hasyim Asy'ari**  
**Aries Dwi Indriyanti, Universitas Negeri Surabaya**

## ABSTRACT

*Evaluation of satisfaction is an act of assessing the performance of teaching staff in carrying out their duties or responsibilities and being able to meet predetermined expectations. This study aims to build a system of student satisfaction on the performance of teaching staff and implement a hash based algorithm to help process the satisfaction evaluation assessment. The hash based algorithm generates information for the next iteration in the current iteration, so that it can efficiently generate large itemset and can be a solution in determining the frequent itemset from candidate itemset optimally. In this study, the data is processed using a hash-based algorithm in order to obtain results in the form of frequent itemsets that are useful in forming association rules. From the results of the formation of these association rules, it can be analyzed the assessment pattern of the teaching staff, in order to be a morale booster, or improve the quality of the teaching staff. The results showed that the index of the level of student satisfaction on the performance of teaching staff in the information system design course ranged from 54% to 100%. This means that students are satisfied at the moderate to very good level.*

**Keywords:** Association Rules; Hash Based; Student Satisfaction; Teacher Performance.

## INTRODUCTION

At present the community's need for formally held education is increasing, especially in universities, this can make universities as producers of quality human resources. Improving the quality of a university is influenced by the quality of the university. Factors that influence the quality of education are teaching staff who play a very important role in producing skilled and quality graduates (Kistofer et al., 2019).

In this study, the instrument of student satisfaction on the performance of teaching staff was taken from the Quality Assurance Institute of Hasyim As'ari University using four criteria, namely, learning preparation, learning process, learning evaluation and scientific attitude. Satisfaction is a positive attitude or perception of students towards products or services that have met their expectations, students will feel dissatisfied if their expectations have not been achieved. A service has the potential to meet or not the expectations of students. Assessment of the level of student satisfaction is one aspect of the assessment of the quality of educational services which has an important meaning for the continuity of the education system. The results of these assessments can be used to guide a better education system (Ghazanfari et al., 2020).



The results of data processing in a simple way do not get effective results because of the large volume of data processed. Utilization of information and knowledge contained in the amount of data is called data mining (Mashuri et al., 2019). Data mining is a series of processes that use statistical, mathematical and artificial intelligence techniques to convert useless data into data that contains valuable and useful information from large databases (Dzakiyullah et al., 2018; Aries Dwi Indriyanti et al., 2019a; Wardhana et al., 2019). Data mining is not a new field, data mining inherits many aspects and techniques from existing fields of science (Prehanto et al., 2020).

One of the data mining algorithms that is often used in association rules is a hash based algorithm. The hash based algorithm produces information for the next iteration in the current iteration, so that it can efficiently generate large itemset and can be a solution in determining the frequent itemset from candidate itemset optimally (Prehanto et al., 2019). The hash based algorithm uses hashing techniques to filter out itemsets that are not important for the next itemset generation (Permadi et al., 2019).

## MATERIALS AND METHODS

### Data Mining

Data mining is a process that uses statistical, mathematical, artificial intelligence, and machine learning techniques to extract and identify useful information and related knowledge from large databases (Zahrotun et al., 2018). Data mining is divided into several based on the tasks that can be performed, namely (Si et al., 2019):

1. Description: The analysis simply wants to try to find a way to describe the patterns and trends contained in the data. Patterns and tendencies often provide possible explanations for a pattern or trend.
2. Estimate: In the estimation process, it tends to be numerical rather than nominal. The model is built using a complete record that provides the value of the target variable as the predicted value. Examples of these algorithms are Linear Regression and Neural Network.
3. Prediction: In the prediction, the data used is time series data and the final result value is used for some time to come.
4. Classification: In the classification of the target variable in the form of categorical data. An example of classification is people's income is classified into three groups, namely high, medium and low income. The classification algorithms are Naïve Bayes, K-Nearest Neighbor, and C4.5.
5. Clustering: Grouping of data or the formation of data in the same type. Clustering divides data into relatively equal groups. Examples of clustering algorithms are Fuzzy C-Means and Kmeans.
6. Association: Associations are used to find items that appear at the same time and look for relationships between one or two more in a data set. Examples of association algorithms are FP-Growth, Apriori and Hash Based (Hossain et al., 2019).

In this study the authors used association groups. Association is the process of processing data to find a combination of items that appear at one time (Indriyanti et al., 2019b).

### Association Rule

Association Rule is a process to find patterns of associative rules that meet the minimum requirements for support and the minimum requirements for confidence in the database. Association rule is a procedure to find the relationship between items in a specified dataset. Association rule includes two stages(Nomura et al., 2020). The stages are:

1. Look for the most frequent combination of an item set that has support above the minimum support. This is called the frequent itemset.
2. Defines association rules from frequent itemset that have been created based on the minimum support and minimum confidence rules.

Generally, there are two measures used in determining an association rule, namely support and confidence. These two measures will later be useful in determining the attractive association rule, which is to be compared with a predetermined limit. The limitation consists of minsup and minconf (Prehanto et al., 2019).

### Minimum Support

Minimum support is a measure or value that must be met as a limit on the frequency of occurrence (support count) of the entire dominance value of an item or itemset (support) in the entire transaction.

$$\text{Support A} = \frac{\text{Amount Transaction of containing A}}{\text{Total Transaction}} \times 100\% \quad (2.1)$$

To find the support value of 2 items is as follows:

$$\text{Support (A,B)} = \frac{\text{Amount Transaction of containing A and B}}{\text{Total Transaction}} \times 100\% \quad (2.2)$$

### Minimum Confidence

The minimum confidence value is a parameter that defines the minimum level of a relationship value between items (confidence) that must be met in order to find quality rules. The confidence value is obtained by the following formula:

$$\text{Confidence} = P(A|B) = \frac{\text{Amount Transaction of containing A and B}}{\text{Amount Transaction of containing A}} \times 100\% \quad (2.3)$$

### Hash Based Algorithm

Hash based algorithm is the development of a priori algorithm which is used to determine rule association. Hash based algorithm can be a solution to overcome the problem of determining the frequent k-itemset from a large number of k-itemset candidates. By using hashing technique, the scanned k-itemset candidates will be entered into the bucket in the hash table. From the bucket, it will be used to search for frequent (k+1)-itemsets so that the database scan is only done once in the first iteration (Siregar et al., 2021). This algorithm generates information for the next iteration in the current iteration. The technique used in the hash based algorithm is a hashing technique to filter out itemsets that are not important for the next itemset generation. When the support count for candidate itemsets is calculated by browsing the database, this algorithm collects information about the (k+1)-itemsets by means of all possible (k+1)-itemsets being hashed into a hash table using a hash function. The bouquet in each hash table contains the number of times the itemset has been hashed into the bouquet (Imdadi & Rizvi, 2011). Based on the hash table, then a bit vector will be built, where the bit vector is worth 1 if the number in the bouquet is greater than or equal to the minimum support. In the candidate generation section, after calculating  $C_k = L_{k1} * L_{k-1}$ , each k-itemset is checked whether the itemset is hashed into a bouquet that has a bit vector equal to 1. Otherwise, the vector will be omitted or not used. The use of a hash table reduces the number of candidate k-itemsets, thereby reducing the computational value of generating

the itemset in each iteration (Naresh & Suguna, 2019). The process of hashing the candidate 1-itemset using the formula (Naresh & Suguna, 2019):

$$h(x) = (\text{order of item } x) \bmod n \quad (2.4)$$

Where, h = bucket address in hash table

n = multiple addresses ( $n=2.m+1$ , m=total number of items)

Process hashing against candidates 2-itemset:

$$h(k) = ((\text{order of } x) * 10 + \text{order of } y) \bmod n \quad (2.5)$$

In the calculation of the 2-itemset formula, a collision will be found (there is more than 1 itemset that has the same hash address). When a collision occurs, it is immediately checked to find the address of an empty bucket. After checking, if an indication is found that the hash table is half filled, it is necessary to rehash it with 2 times the number of addresses before. To solve this problem, a different formula is used, namely (Ali et al., 2019):

$$h(k) = ((\text{order of } x) * 10 + \text{order of } y) \bmod j \quad (2.6)$$

Where,

j : many addresses after adding ( $j=2*m+1$ ), m= the number of addresses in the hash table before adding)

Process hashing against candidates 3-itemset:

$$h(k) = ((\text{order of } x) * 100 + (\text{order of } y) * 10 + \text{order of } z) \bmod j \quad (2.7)$$

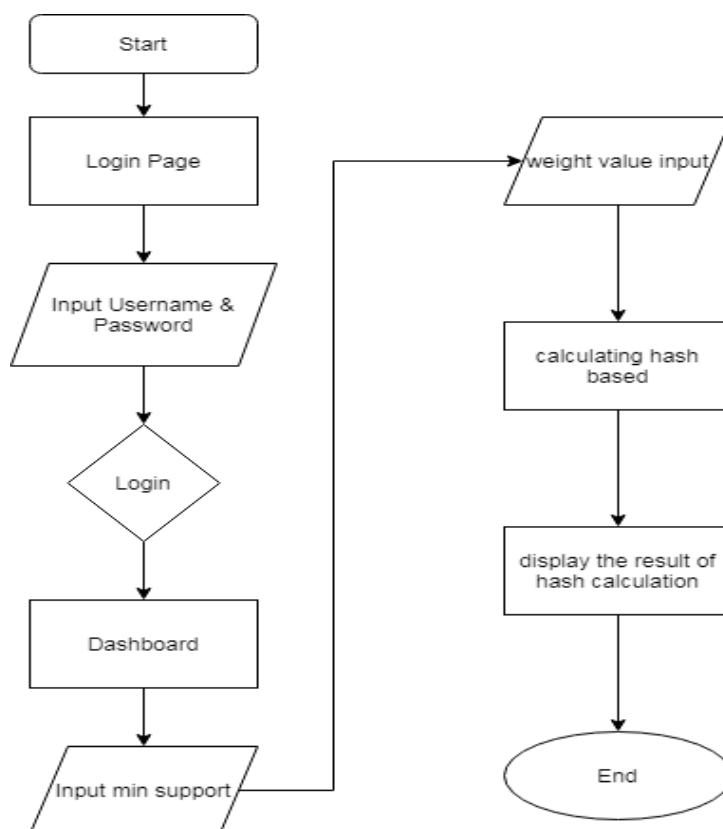
## RESULTS AND DISSCUSION

The instrument used in this study is intended to produce accurate data by using a Likert scale. The Likert scale is used to measure an attitude, opinion and perception of a person or group of people about a social phenomenon (Permadi et al., 2018). Selection of the right instrument is needed to obtain objective data and information. The instrument used in this study is an instrument for assessing the performance of teaching staff at Hasyim Asy'ari University (Table 1).

<b>Table 1</b>	
<b>TEACHER PERFORMANCE ASSESSMENT INSTRUMENT</b>	
No	Kind of service
<b>A. Learning Preparation</b>	
1	Submitting Semester Lecture Plans (RPS)
2	Submit a study agreement/contract
3	Number of attendance of substitute teachers/lectures
<b>B. learning process</b>	
4	Delivering lecture material clearly
5	Provide opportunities for students to ask questions / express opinions
6	Teachers' answers to students' questions related to lecture material materi
7	Lecture time according to Semester Credit Unit weight Kredit (SKS)
8	Keeping the class schedule according to the schedule determined majors / study programs
9	Optimal use of facilities and infrastructure
10	Return of Assignments and Mid-Semester Exams (UTS)
11	Suitability of lecture/practice materials, assignments, UTS and UAS
12	Delivering information on various source books/ textbooks/ handouts
13	Conducting tutoring / structured
14	Has a variety of up-to-date references
<b>C. Learning Evaluation</b>	

15	Objectivity in assessment: assignments, tests, and lecture participation
16	Punctuality in submitting grades
	<b>D. Scientific Attitude</b>
17	The attitude of openness of scientists and academics
18	Dress politely, neatly and appropriately
19	Easy to find for related consultation study
20	Ability to create a conducive atmosphere/ motivation suasana

The flowchart design of the student satisfaction system on the performance of the teaching staff can be seen in the Figure 1.



**FIGURE 1**

## **FLOWCHART DESIGN OF THE STUDENT SATISFACTION SYSTEM**

### **Pre-Processing Data**

This is the stage where data initialization is carried out before the data is processed using a hash based algorithm. The data initialization process is carried out by converting the initial data which is still in the form of assessment questionnaire data into data that is ready to be processed by a hash-based algorithm, the data that is ready to be processed can be called transaction data. The following is the initial data before the preprocessing stage is mapped in the Table 2.

The data used is assessment data on aspect 1 from one of the lecturers at Hasyim Asy'ari University, with a minimum support of 50% and a minimum confidence of 50%. The meaning of the numbers in Table 2 is the questionnaire rating scale of the teaching staff.

Table 2 FIRST DATA										
Question Answer	11	12	13	14	15	16	17	18	19	10
1	5	5	5	4	4	5	4	5	5	5
2	5	4	3	5	4	3	3	5	5	4
3	3	5	4	4	4	4	4	5	3	4
4	4	3	3	4	4	5	5	4	5	4
5	5	4	3	4	5	4	4	5	5	4
6	5	4	4	4	5	4	3	4	4	4
7	3	4	3	4	5	5	5	4	4	3
8	4	4	4	5	4	4	4	3	4	4
9	3	3	3	4	4	3	4	5	2	4
10	5	4	4	4	5	4	3	4	4	4
11	3	4	3	4	5	5	5	4	4	3
12	4	4	4	5	4	4	4	3	4	4
13	3	3	3	4	4	3	4	5	2	4
14	4	3	3	4	3	4	4	3	4	3
15	3	3	3	4	4	4	3	4	2	4
16	4	3	3	4	4	4	4	4	3	4
17	3	3	3	4	3	4	3	3	3	4
18	4	4	3	4	3	3	4	4	4	3
19	3	3	3	4	5	5	5	4	4	4
Question Answer	11	12	13	14	15	16	17	18	19	10
1	4	4	3	4	4	4	5	4	3	3
2	4	3	4	5	4	3	3	5	4	4
3	5	4	4	4	3	4	3	3	4	4
4	5	5	4	3	5	5	4	4	4	3
5	4	4	3	5	5	4	4	3	4	4
6	3	4	4	5	4	4	3	4	3	4
7	4	5	4	4	5	4	4	5	4	5
8	5	3	2	3	2	4	3	4	2	3
9	4	4	2	4	4	4	4	4	3	4
10	3	4	4	5	4	4	3	4	3	4
11	4	5	4	4	5	4	4	5	4	5
12	5	3	2	3	2	4	3	4	2	3
13	4	4	2	4	4	4	4	4	3	4
14	4	3	3	3	4	3	3	4	4	3
15	3	3	4	4	4	4	4	4	3	3
16	4	4	4	3	4	5	3	3	4	3
17	4	3	3	3	3	3	4	3	4	4
18	3	3	3	3	4	4	3	3	4	3
19	4	5	5	5	4	3	5	3	3	4

Very good=5; Good=4; Enough=3; Less=2; Very Less=1

After preprocessing, it will get ready-to-process data in the form of transaction data that is ready to be processed by a hash-based algorithm, which is tabled in Table 3.

### Calculation Hash-based Algorithm

The ready data that has been formed in the preprocessing stage is then processed using a hash based algorithm in order to obtain results in the form of frequent itemsets that are useful in forming association rules. There are 2 stages used in the hash-based algorithm, namely the formation of frequent items and the formation of association rules, here are the steps:

## Formation of Frequent Item Set Aspect 1

The formation of frequent itemset is the main stage in the association rules, because at this stage the formation of itemsets is carried out which includes mapping and itemset combinations, itemset hashing addressing, itemset pruning, which from the whole process is influenced by minimum support. In the formation of frequent itemset, transaction data obtained from the preprocessing stage is required which is mapped in Table 3.

Transaction ID	Item	Transaction ID	Item
T1	SB,SB,SB	T13	B,K,C
T2	SB,B,C	T14	C,C,B
T3	C,SB,B	T15	C,C,B
T4	B,C,C	T16	C,C,C
T5	SB,B,C	T17	B,C,C
T6	SB,B,B	T18	C,C,C
T7	C,B,C	T19	B,B,C
T8	B,B,B	T20	C,C,C
T9	C,C,C	T21	B,B,SB
T10	B,C,C	T22	K,C,C
T11	SB,B,B,	T23	C,C,C
T12	SB,C,B	T24	C,C,B

### Itemset Mapping (1-itemset)

From 24 transaction data, 4 itemsets were obtained which are tabled in Table 4.

No	Itemset
1	B
2	C
3	K
4	SB

### Hashing Addressing (1-itemset)

To perform hasing, each itemset is ordered by order of items in the data. The order of items in the data is used as the first address sequence before further processing. For more details can be seen in Table 5.

Order of item	Itemset
1	B
2	C
3	K
4	SB

After sorting the 1-itemset itemset, then the hashing process is carried out by entering each itemset into the bucket in the hash table using equation 2.4, namely  $h(x) = (\text{order of item } x) \bmod n$  dengan  $n=9$ .

<b>Table 6</b> <b>PROSES HASHING 1-ITEMSET</b>		
<b>Itemset</b>	<b>Process</b>	<b>Address</b>
B	$h(B) = (1) \bmod 9$	1
C	$h(B) = (2) \bmod 9$	2
K	$h(C) = (3) \bmod 9$	3
SB	$h(SB) = (4) \bmod 9$	4

### Trimming Item Set (1-itemset)

Itemset pruning is used to filter itemsets that match the specified minimum support, which is 50% of the transaction data or equal to 12 pieces, if less than 12 items then the itemsets will be removed and not used in the next iteration. The following itemsets will be carried out in the 1-itemset pruning process, which can be seen in the Table 6.

<b>Table 7</b> <b>TABLE JOIN TRIMMING</b>	
<b>Item set</b>	<b>Count</b>
B	17
C	20
K	2
SB	7

After trimming, the data from the trimming will be generated as shown in Table 7.

<b>Table 8</b> <b>PRUNING RESULTS TABLE</b>	
<b>itemset</b>	<b>count</b>
B	17
C	20
K	2
SB	7

With the pruning results obtained as shown in Table 8, there are several itemsets that meet the minimum support, so it can be continued to the next stage, by generating the itemset again, namely 2-itemset.

### Itemset Mapping (2-Itemset)

The 4 itemsets in the first iteration (1-itemset) 2 itemsets were obtained that passed the second iteration (2-itemset), and a combination process was carried out which resulted in 1 itemset (Table 9).

<b>Table 9</b> <b>ITEMSET MAPPING 2-ITEMSET</b>	
<b>No</b>	<b>Itemset</b>
1	B,C

### Addressing Hashing (2-itemset)

Then the hashing process is carried out on the 2-itemset itemset by entering each itemset into the bucket in the hash table. The hashing process on itemsets that have more than

one itemset (1-itemset) will use equation 2.5, namely  $h(k) = ((\text{order of } x) * 10 + \text{order of } y) \bmod n$  with  $n=3$ .  $h(B,C) = ((1) * 10 + 2 \bmod 3 = 0$  After addressing, the address of the itemset 2 itemset is obtained which is tabled in Table 10.

Table 10 ADDRESS 2-ITEMSET ITERASI 1	
Itemset	Alamat
B,SB	0

After that, the frequent itemset collection process is carried out from the hash-based calculation process that has been carried out. Can be seen in the Table 11.

Table 11 FREQUENT ITEMSETS		
Item	Count	Support
B	17	$(17/24) \times 100 = 70\%$
C	20	$(20/24) \times 100 = 83\%$
B,C	14	$(14/24) \times 100 = 58\%$

## Establishment of Association Rules Aspects 2

The formation of Association rules is used to determine the relationship between the itemset, where the itemset in the form of a scale will show the relationship between which scales are said to be good from the assessment of the teaching staff concerned. From the results of the formation of these association rules, it can be analyzed the assessment pattern of the teaching staff, in order to be a morale booster, or improve the quality of the teaching staff. The results of the formation of association rules with a minimum 50% confidence can be seen in Table 12.

Table 12 ASOCIATION RULES			
Item	Support (XY)	Support (X)	Confidence
$B \geq C$	14	17	0,82
$C \geq B$	14	20	0,70

Repeat these steps on aspects 2,3 and 4.

Displays all the results of association rules from all aspects.

After all aspects are calculated using a hash based, then the next step is to collect all the association rules from the results of each existing aspect. The following is the result of the overall association rule (Tables 13-15).

Table 13 ASPECT ASSOCIATION RULES 1			
Item	Support (XY)	Support (X)	Confidence
$B \geq C$	14	17	0,82
$C \geq B$	14	20	0,7



<b>Table 14</b> <b>ASPECT ASSOCIATION RULES 2</b>			
<b>Item</b>	<b>Support (XY)</b>	<b>Support (X)</b>	<b>Confidence</b>
$B \geq C$	23	24	0,95
$B \geq SB$	14	24	0,58
$C \geq B$	23	23	1
$C \geq SB$	13	23	0,56
$SB \geq B$	14	14	1
$SB \geq C$	13	14	0,92
$B \geq C, SB$	13	24	0,54
$C \geq B, SB$	13	23	0,56
$SB \geq B, C$	13	14	0,92
$B, C \geq SB$	13	23	0,56
$B, SB \geq C$	13	14	0,92
$C, SB \geq B$	13	13	1

<b>Table 15</b> <b>ASPECT ASSOCIATION RULES 4</b>			
<b>Item</b>	<b>Support (XY)</b>	<b>Support (X)</b>	<b>Confidence</b>
$B \geq C$	18	21	0,85
$C \geq B$	18	21	0,85

As a result, 16 process association rules were formed based on predetermined parameters, namely a minimum support of 50% and a minimum of 50% confidence. In one of the rules formed, for example the rule in aspect 2:  $B \geq C$  with a 95% confidence value means that 95% of students who choose good also choose enough.

## CONCLUSION

Based on the research that has been done, the conclusion of this study is that the index of the level of student satisfaction on the performance of teaching staff in information system design courses ranges from 54% to 100%. This means that students are satisfied at the level of enough to very good.

## REFERENCES

- Ali, Y., Farooq, A., Alam, T.M., Farooq, M.S., Awan, M.J., & Baig, T.I. (2019). Detection of Schistosomiasis Factors Using Association Rule Mining. *IEEE Access*, 7, 186108-186114.
- Dzakiyullah, N.R., Saleh, C., Rina, F., & Fitra, A.R. (2018). Estimation of Carbon Dioxide Emission Using Adaptive Neuro-Fuzzy Inference System. *Journal of Engineering and Applied Sciences*, 13(6SI), 5196-5202.
- Ghazanfari, B., Afghah, F., & Taylor, M.E. (2020). Sequential Association Rule Mining for Autonomously Extracting Hierarchical Task Structures in Reinforcement Learning. *IEEE Access*, 8, 11782-11799.
- Hossain, M., Sattar, A.H.M.S., & Paul, M.K. (2019). Market basket analysis using apriori and FP growth algorithm. *2019 22nd International Conference on Computer and Information Technology, ICCIT 2019*, 1-6.
- Imdadi, N., & Rizvi, S.A.M. (2011). Using Hash based Bucket Algorithm to Select Online Ontologies for Ontology Engineering through Reuse. *International Journal of Computer Applications*, 28, 21-25.
- Indriyanti, A.D., Prehanto, D.R., Permadi, G.S., Mashuri, C., & Vitadiar, T.Z. (2019a). Using Fuzzy Time Series (FTS) and Linear Programming for Production Planning and Planting Pattern Scheduling Red Onion.

- The 4th International Conference on Energy, Environment, Epidemiology and Information System (ICENIS 2019).*
- Indriyanti, A.D., Prehanto, D.R., Prisma, I.G.L.E.P., Soeryanto, Sujatmiko, B., & Fikandda, J. (2019b). Simple Additive Weighting algorithm to aid administrator decision making of the underprivileged scholarship. *Journal of Physics: Conference Series*, 1402.
- Kistofer, T., Permadi, G.S., & Vitadiar, T.Z. (2019). Development of Digital System Learning Media Using Digital Learning System. *Proceedings of the 1st Vocational Education International Conference (VEIC 2019).*
- Mashuri, C., Mujiyanto, A.H., Sucipto, H., Arsam, R.Y., & Permadi, G.S. (2019). Production Time Optimization using Campbell Dudek Smith (CDS) Algorithm for Production Scheduling. *The 4th International Conference on Energy, Environment, Epidemiology and Information System (ICENIS 2019).*
- Naresh, P., & Suguna, R. (2019). Association rule mining algorithms on large and small datasets: A comparative study. *2019 International Conference on Intelligent Computing and Control Systems, ICCS 2019*, 587-592.
- Nomura, K., Shiraishi, Y., Mohri, M., & Morii, M. (2020). Secure Association Rule Mining on Vertically Partitioned Data Using Private-Set Intersection. *IEEE Access*, 8, 144458-144467.
- Permadi, G.S., Adi, K., & Gernowo, R. (2018). Application Mail Tracking Using RSA Algorithm As Security Data and HOT-Fit a Model for Evaluation System. *The 2nd International Conference on Energy, Environmental and Information System (ICENIS 2017).*
- Permadi, G.S., Vitadiar, T.Z., Kistofer, T., & Mujiyanto, A.H. (2019). The Decision Making Trial and Evaluation Laboratory (Dematel) and Analytic Network Process (ANP) for Learning Material Evaluation System. *The 4th International Conference on Energy, Environment, Epidemiology and Information System (ICENIS 2019).*
- Prehanto, D.R., Indriyanti, A.D., Nuryana, K.D., Soeryanto, S., & Mubarak, A.S. (2019). Use of Naïve Bayes classifier algorithm to detect customers' interests in buying internet token. *Journal of Physics: Conference Series*, 1402.
- Prehanto, D.R., Indriyanti, A.D., Permadi, G.S., Vitadiar, T.Z., & Jayanti, F.D. (2020). Library book modeling data using the association rule method with apriori algorithm in determining book placement and analysis of book loans. *International Journal of Advanced Science and Technology*, 29(5), 1244-1250.
- Si, H., Zhou, J., Chen, Z., Wan, J., Xiong, N.N., Zhang, W., & Vasilakos, A.V. (2019). Association Rules Mining among Interests and Applications for Users on Social Networks. *IEEE Access*, 7, 116014-116026.
- Siregar, A.H., Lydia, M.S., & Wage, S. (2021). Association Rule Analysis using CT-Pro and Hash-based Algorithm in Violence Case of Children. *In Proceedings of the International Conference on Culture Heritage, Education, Sustainable Tourism, and Innovation Technologies - CESIT*, 565-573.
- Wardhana, M.H., Samad, A., Basari, H., Syukor, A., Jaya, M., & Afandi, D. (2019). A Hybrid Model using Artificial Neural Network and Genetic Algorithm for Degree of Injury Determination. *International Journal of Innovative Technology and Exploring Engineering*, 9(2), 1357-1365.
- Zahrotun, L., Soyusiawaty, D., & Pattihua, R.S. (2018). The implementation of data mining for association patterns determination using temporal association methods in medicine data. *2018 International Seminar on Research of Information Technology and Intelligent Systems, ISRITI 2018.*

**Received:** 02-Aug-2022, Manuscript No. JMIDS-22-12409; **Editor assigned:** 03-Aug-2022, PreQC No. JMIDS-22-12401(PQ); **Reviewed:** 17-Aug-2022, QC No. JMIDS-22-12401; **Revised:** 19-Aug-2022, Manuscript No. JMIDS-22-12401(R); **Published:** 26-Aug-2022